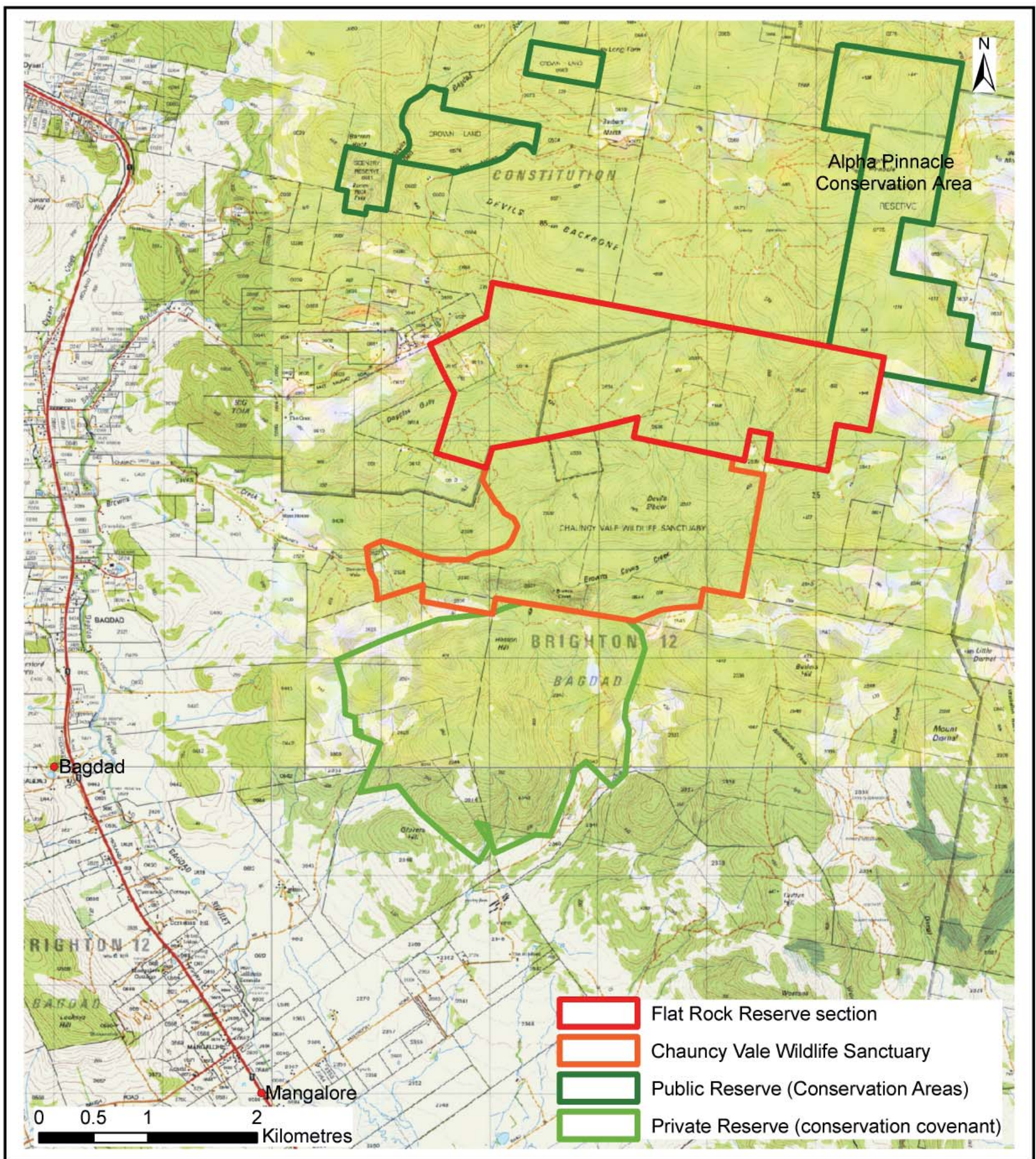


Addition to the Chauncy Vale Wildlife Sanctuary



Flat Rock Reserve was purchased for the purpose of nature conservation in August 2006 by the Tasmanian Land Conservancy. The reservation of this land protects three vegetation communities that are threatened in Tasmania and conserves habitat for threatened species, including the wedge-tailed eagle and swift parrot. The purchase of this land for conservation also links the Chauncy Vale Wildlife Sanctuary with Alpha Pinnacle Conservation Area, creating the largest conservation area in the Southern Midlands Council area.

Flat Rock Reserve is managed cooperatively by the Southern Midlands Council, the Friends of Chauncy Vale and the Tasmanian Land Conservancy. A Management Plan for the three reserves will be developed by mid-2007, and it is envisaged that a walking track connecting the three reserves will be built in the future.

Your assistance is needed to ensure that the conservation values of this reserve are protected for future generations of Tasmanians. Rubbish dumping, shooting, wood cutting and unauthorised vehicle access are not permitted. Offenders will be prosecuted to the full extent of the law.

For more information, please contact Southern Midlands Council on (03) 6259 3011 or visit www.tasland.org.au



Base layers supplied by LIST
Base images supplied by TASMAR